

Release and Installation Notes

BEM 11.22.4

Document version 1: 28 June 2022.

Contents

BEM and Toolbox Updates	1
Changes in this release from 11.22.3 to 11.22.4	2
BEM, RRD & SERIES	2
Installation Procedure for the BEM version 11.22.4 Package.	3
Changes from 11.22.2 to 11.22.3	11
BEM	11
RRD & SERIES	11
Changes from 11.22.1 to 11.22.2	11
BEM	11
RRD	12
SERIES	13
Changes from 11.21.0 to 11.22.1	13
BEM	13
RRD & SERIES	14
Changes from 11.21.7 to 11.22.0	14
BEM	14
RRD	15
SERIES	15
Operating System Requirements	16

BEM and Toolbox Updates

To avoid any incompatibility problems and to enable all facilities, the Toolbox program you are running should have a minimum version of 3.22.7.

Changes in this release from 11.22.3 to 11.22.4

Version 11.22.4 is a maintenance release correcting a fault with the Race List only showing 1 Time Trial / Qualification stage when 2 are specified.

Because of the nature of the correction, all BEM 11 series users should update to this release without delay.

BEM, RRD & SERIES

- Correction to the building of the Race List when two Time Trial / Pump Track Qualification stages are specified.
Note that scoring was not impacted by the issue being corrected.
- Update to the Time Trial Start List (moto sheet) printed format to use heavier lines between each rider as some printers do not consistently print the faint lines in the previous print template.

Installation Procedure for the BEM version 11.22.4 Package.

Please do not proceed with the installation unless you have both your Registered User Code and the Upgrade Code applicable to this version.

Should you wish to purchase an upgrade to the 11 series or have purchased an upgrade and do not have your User or Upgrade Codes, please contact lyndon@moto-sheets.com

Open the **BEM 11-22-4 Test Release.zip** file and save the **BEM 11-22-4 Test Release.msi** file in any convenient location.

Any BEM installed with a version commencing with 11 MUST be removed via Control Panel, Programs and Features before installing this update.

E.g.

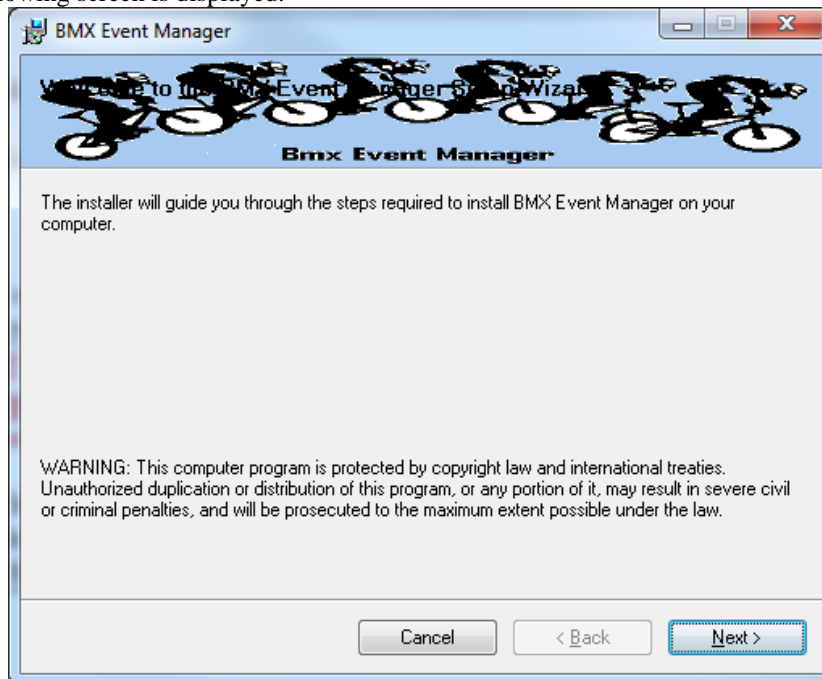
Uninstall or change a program

To uninstall a program, select it from the list and then click Uninstall, Change or Repair.

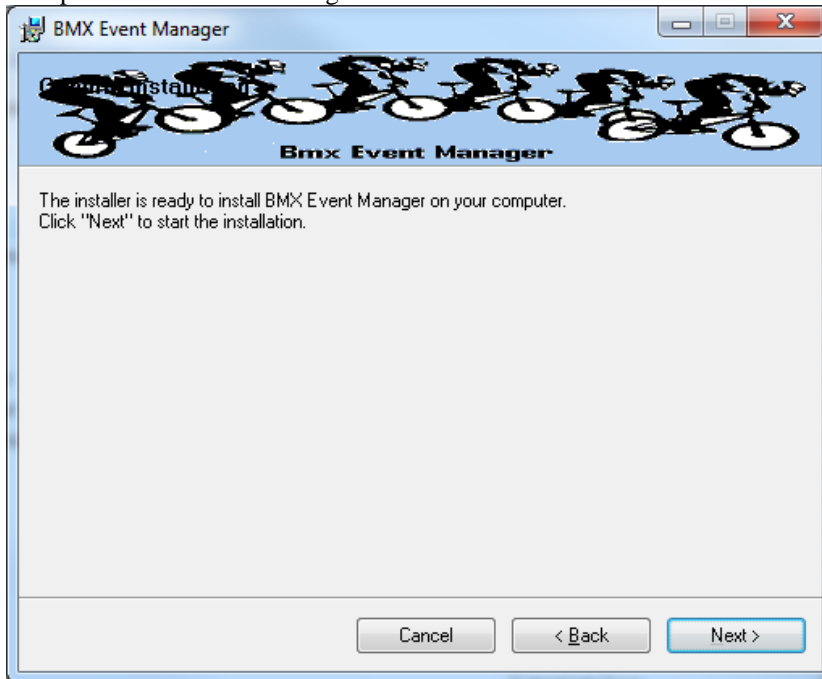
Name	Publisher	Installed On	Size	Version
BEM Toolbox3	Bemman	24/06/2022	3.35 MB	3.22.7
BemTrain	Bemman	27/06/2022	4.60 MB	3.3.1.6
BMX Event Manager	Bemman	09/06/2022	32.1 MB	11.22.3

Double click on the **BEM 11-22-4 Test Release.msi** file saved earlier (see page 3) to start the installer.

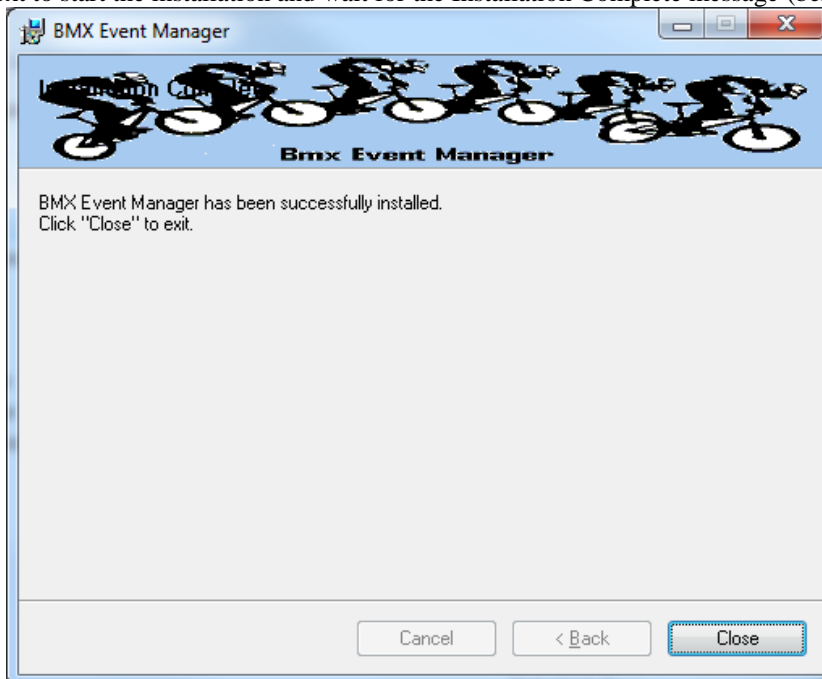
The following screen is displayed.



Click Next to proceed and the following screen is shown.



Click Next to start the installation and wait for the Installation Complete message (below).



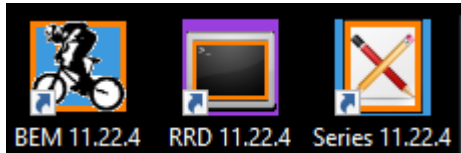
Note that the installation is hardcoded into the folder structure:

C:\BEM\Programs\Event\3.11.x for BEM and Series programs

C:\BEM\Programs\Report\3.11.x for the RRD program.

If not done previously as per step 2.1 on page 18 of this document, Office 2007 and Office 2010 users should include the path C:\BEM\Programs in the Excel list of trusted locations.

The installation procedure installs the BEM, RRD and Series programs, adds the BMX Event Manager group in the Programs Menu and provides shortcuts on the Desktop.



Note: if the shortcuts are added but with default rather than the custom icons, please contact lyndon.downing@bigpond.com for assistance to resolve this issue.



Double click on the BEM icon to start the program.

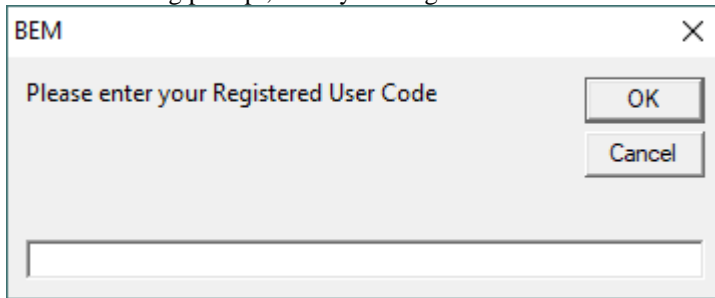
Note that the registration status at the top left of the screen will always show “Unlicensed Copy” before the language selection is made



Select the required language option then click OK

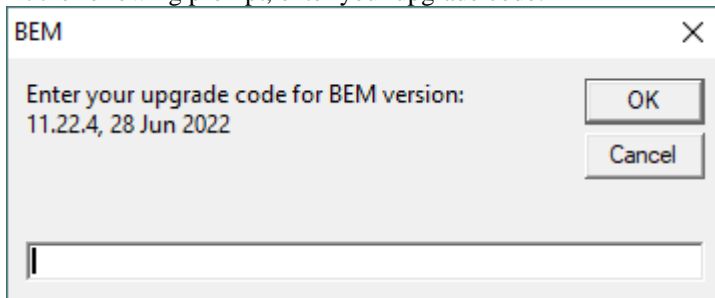
If you do not have a Registered User Code or Upgrade Code for this version then please contact lyndon.downing@bigpond.com

At the following prompt, enter your Registered User Code



A screenshot of a dialog box titled "BEM" with a close button (X) in the top right corner. The main text reads "Please enter your Registered User Code". To the right of the text are two buttons: "OK" and "Cancel". Below the text is a single-line text input field.

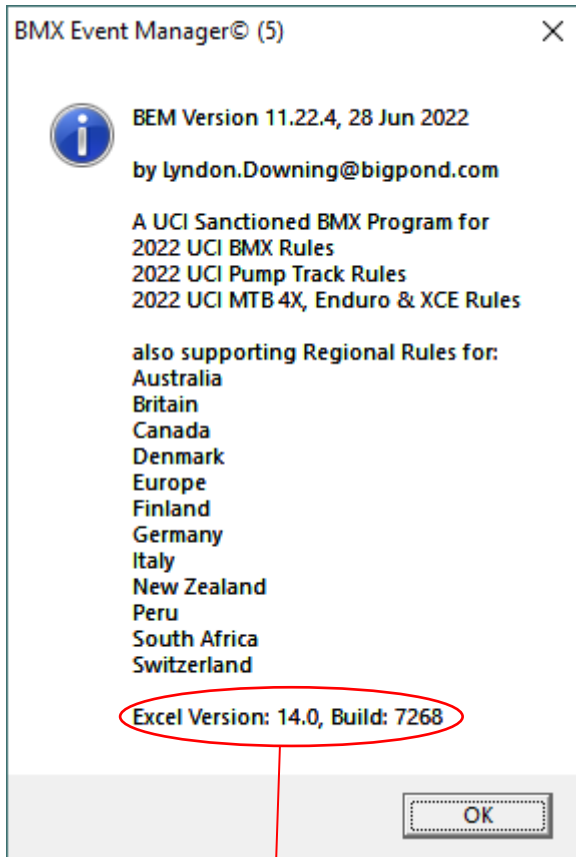
At the following prompt, enter your upgrade code:



A screenshot of a dialog box titled "BEM" with a close button (X) in the top right corner. The main text reads "Enter your upgrade code for BEM version: 11.22.4, 28 Jun 2022". To the right of the text are two buttons: "OK" and "Cancel". Below the text is a single-line text input field.

The BEM version and your PC's Excel version and build details will then be shown.

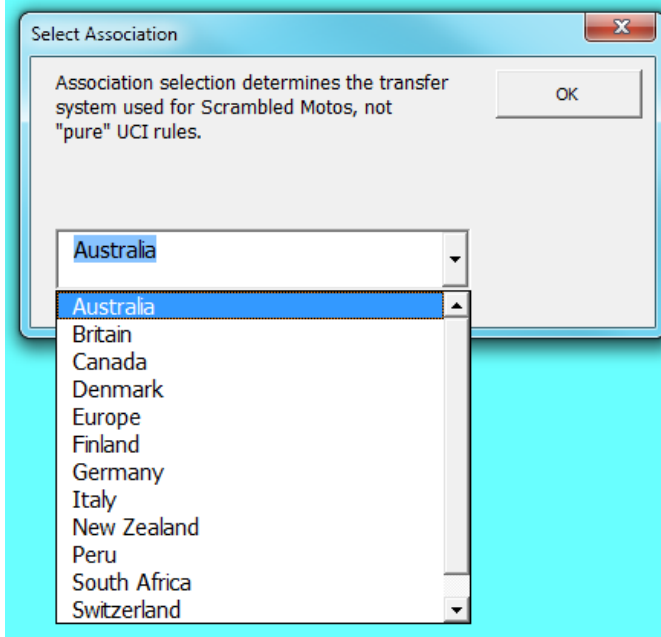
Check that your BEM version and date is as shown below.



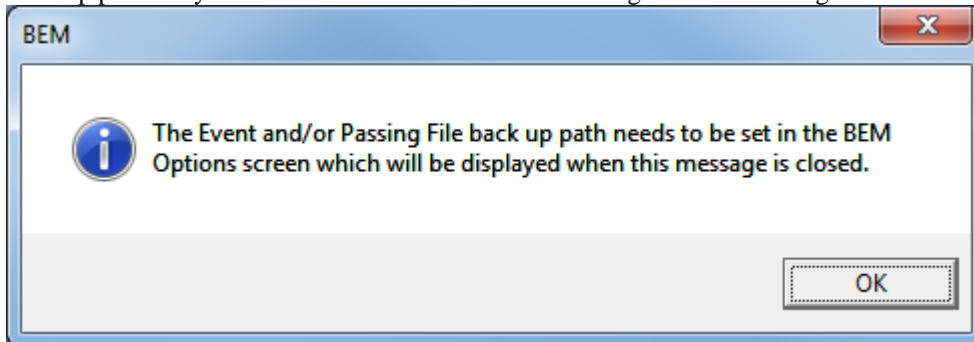
The banner also includes the Excel version and Build numbers running on your computer as a quick check that you have the latest Microsoft Office updates installed. If you do not have versions at least matching the following, there is a good chance that your version of Excel is not up to date and may result in unpredictable operation of the BEM program.

Version	Build	Comment
11.0	8404	Excel 2003, Service Pack 3+
12.0	6762	Excel 2007, Service Pack 2+
14.0	7268	Excel 2010, Service Pack 2+

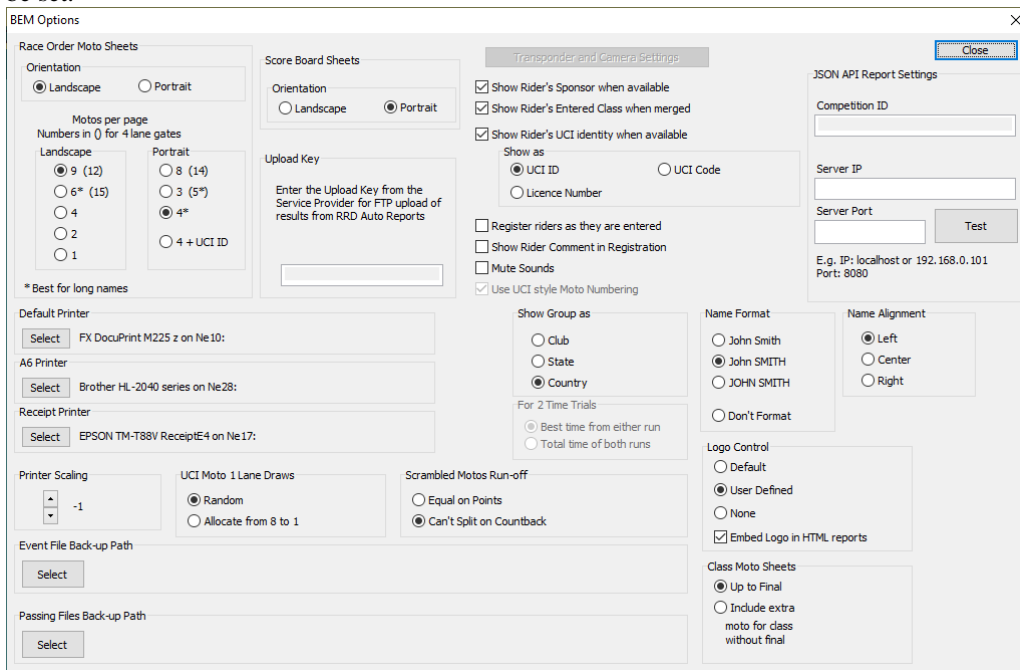
Select the appropriate Association / Region or UCI if used for other than the listed Associations.



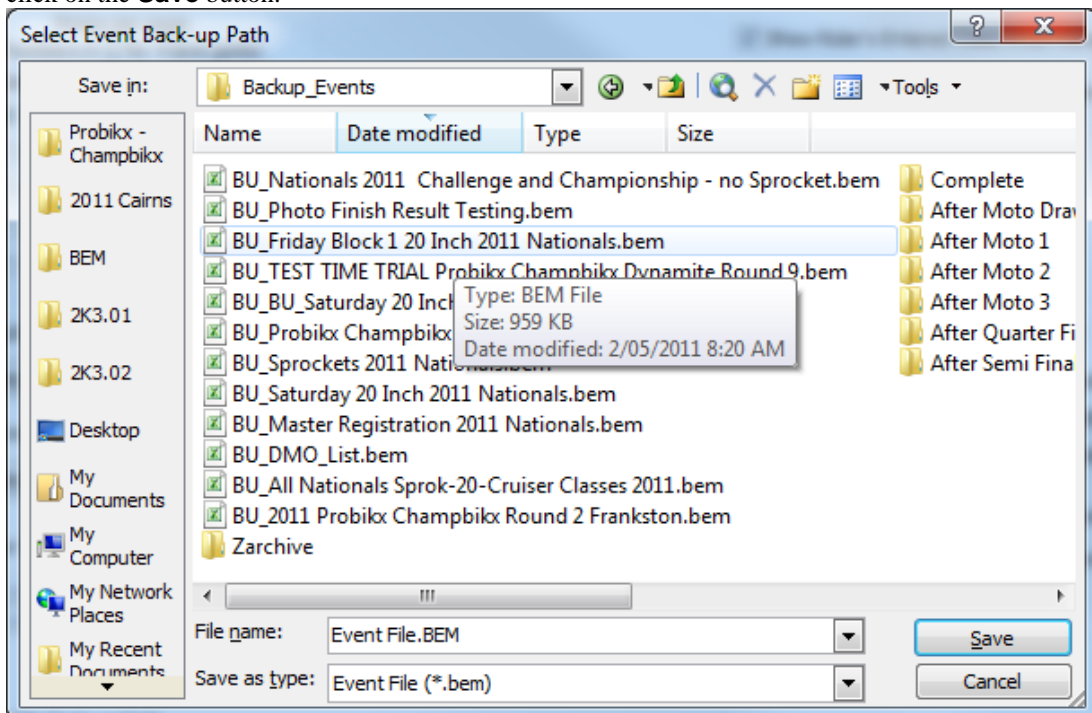
Note that the first time the BEM program is run as a first installation, the Event Files and Passing Files back-up paths may not be set or not valid and the following reminder message will be received.

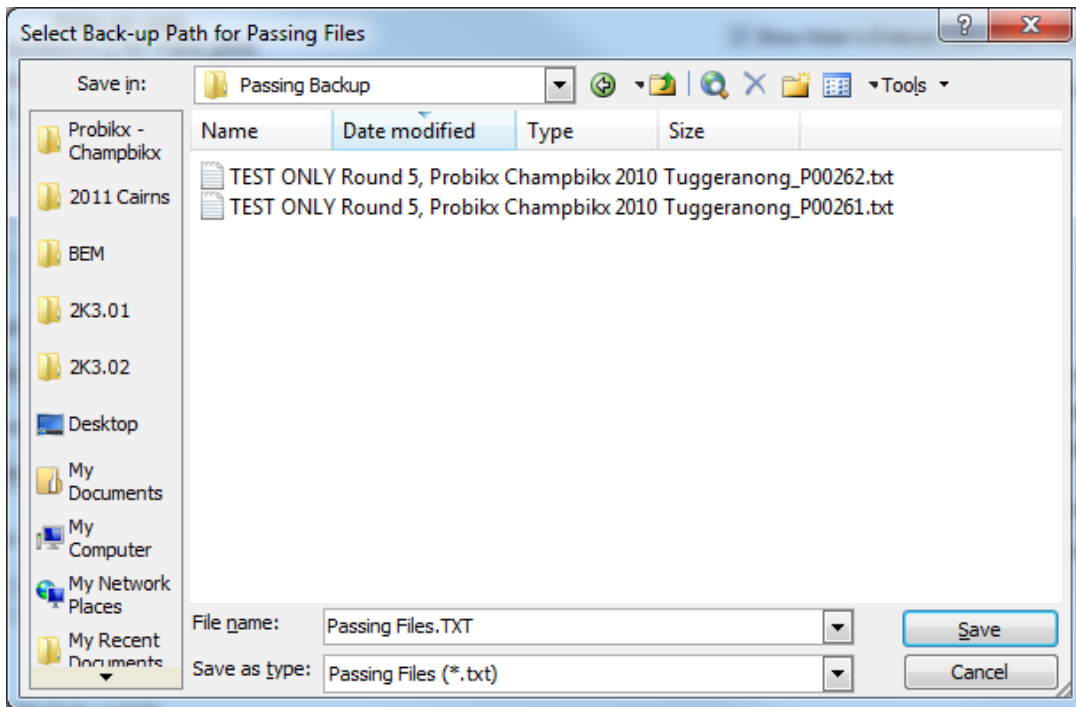


Note that the **Event File Back-up Path** and **Passing Files Back-up Path** are blank and need to be set.

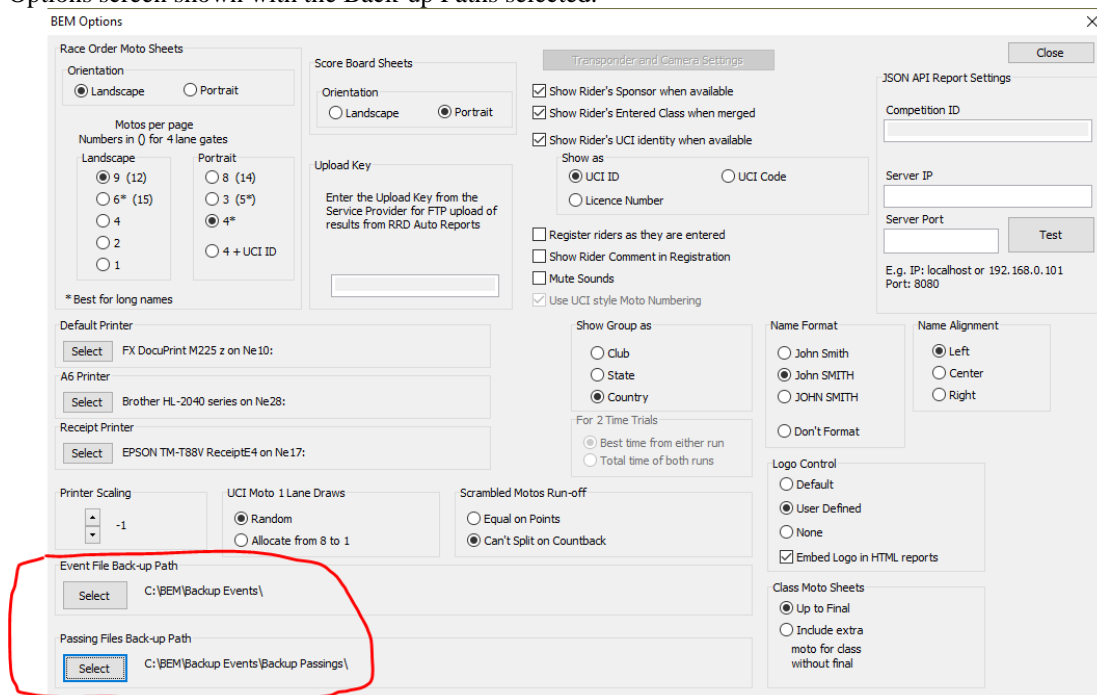


If you recoded the settings from an earlier version BEM installation restore those settings now. To select the paths, click on respective **Select** button, navigate to the required back up folder and then click on the **Save** button.





Options screen shown with the Back-up Paths selected.



Once the Event File Back-up and Passing File Back-up paths are selected and the Scrambled Motos Run-off setting is made you can close the options screen and select an Event File.

NOTE: settings for the SportsLists **Upload Key** and JSON API **Competition ID** can only be made once an event file is opened.

Changes from 11.22.2 to 11.22.3

09-Jun-22

BEM

- Introduces a new Class Code PT-PART for the processing of the Pump Track Participation category where in a similar vein to the PART Class Code for BMX scrambled motos, riders are not scored with placings, only shown as Finish, DNF or DNS.

When the Qualification/Time Trial round(s) are drawn, categories with PT-PART will also draw a Final Run for all riders in the Finals round. I.e. no rider is eliminated from the Qualification stage.

RRD & SERIES

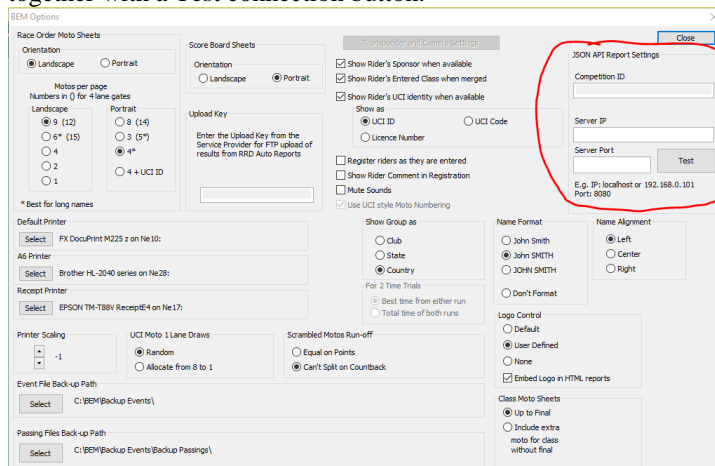
Alignment with BEM changes for the new Class Code.

Changes from 11.22.1 to 11.22.2

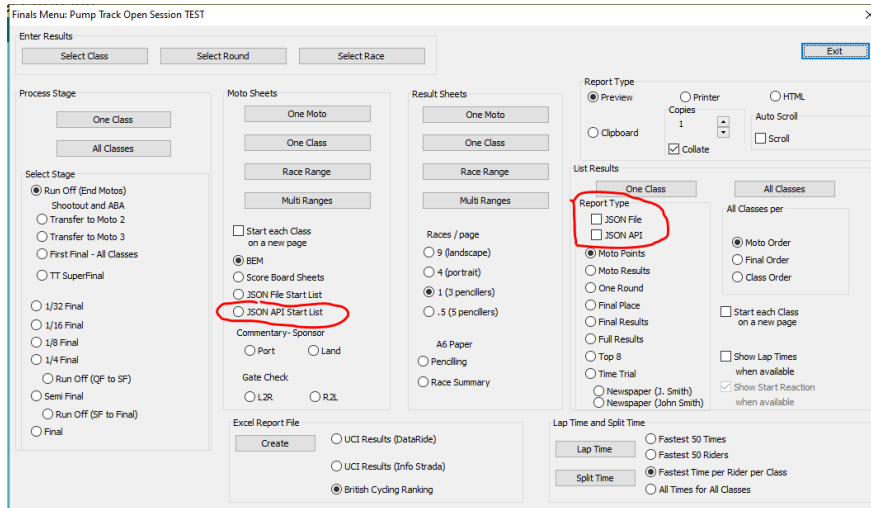
31-May-22

BEM

- For Pump Track events, change the stage name from Time Trial to Qualifying for alignment with the stage name in UCI Rule 4.6.008.
- Add new facility to send Json Start List and Result Reports to the JSON API for subsequent distribution to scoreboards and live stream graphics.
 - Interface settings and the event specific Competition ID added to the BEM Options screen together with a Test connection button.



- JSON API Start List option added to the Moto Sheets group and JSON API selection added to the Report Type group in List Results on the Finals Menu.



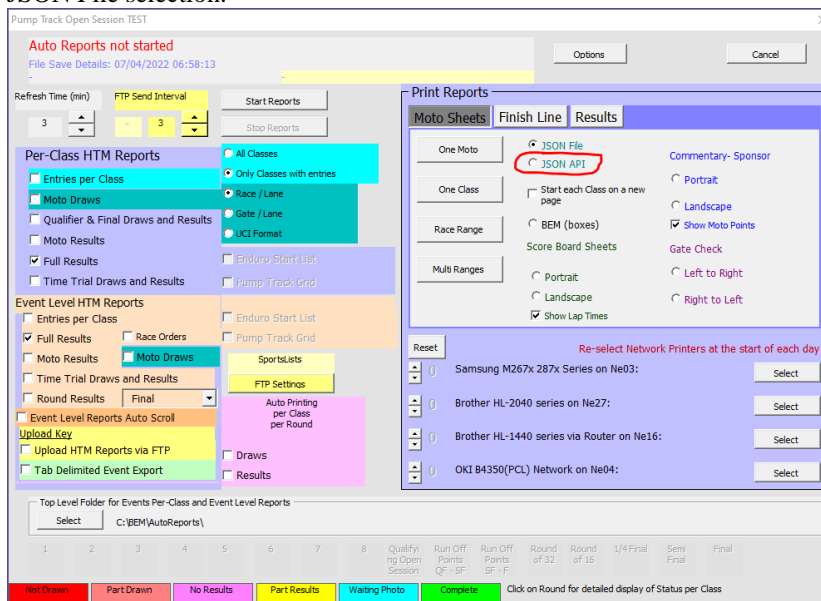
- Json report format updated to include the event specific Competition ID and for Pump Track, change Time Trial heading to Qualifying.

RRD

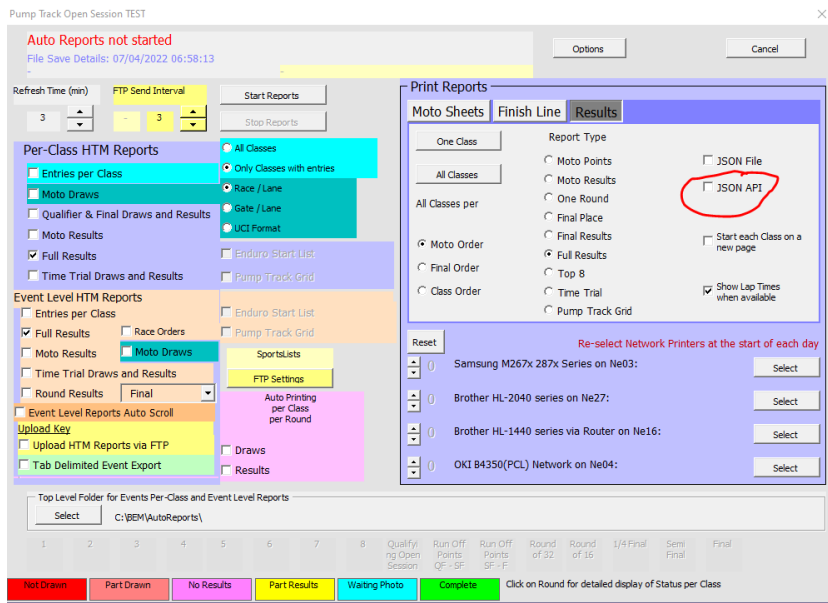
- Json report format changes for operator generated reports updated to the new format with the Competition ID while maintaining the existing format for SportsLists upload.
- Add new facility to send Json Start List and Result Reports to the JSON API from the Auto Reports Moto Sheets and Results tabs and from the Reports menu.

Note that the interface settings for the JSON API are only made in BEM and inherited by RRD.

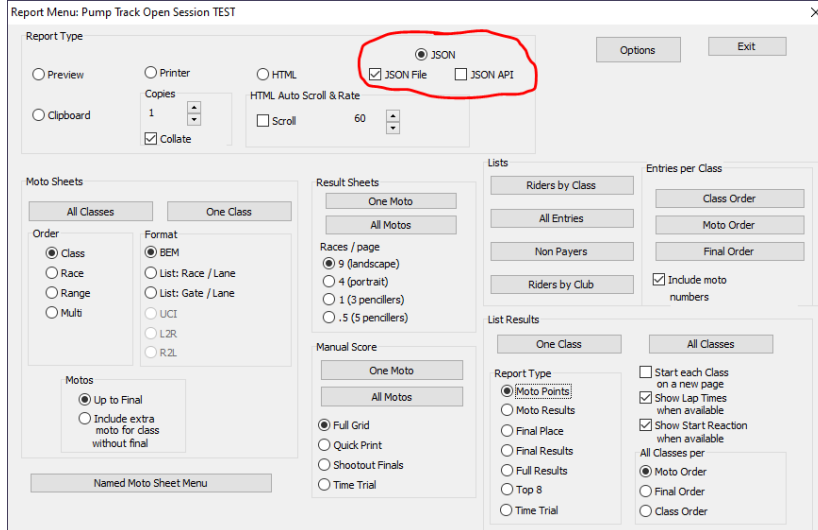
- Auto Reports – Moto Sheets tab, added JSON API option in addition to the existing JSON File selection.



- Auto Reports – Results tab, added JSON API option in addition to the existing JSON File selection.



- Report Menu – added JSON File and JSON API options to the JSON report type.



SERIES

Alignment with BEM changes.

Changes from 11.21.0 to 11.22.1

BEM

- Introduces a new feature to run Mountain Bike Cross Country Eliminator (XCE) format events in conformance with UCI MTB 2022 rules.
Configured in BEM with a new Class Code of MTB-XCE and Score Code of XCE
- Adds a new option for Pump Track Open Session format events to limit the number of riders transferring from the Timed Stage to 16.
Note that while this is not in conformance with UCI Pump Track Rules, the format has been requested for use at World Championship qualifier events.
To avoid confusion with the current Pump Track Open Session Class Code, two new Class Codes have been introduced:

PT-OS-32	UCI compliant rules and identical function to the existing PT-OS Class Code.
PT-OS-16	“Red Bull” Open Session variant limiting transfer from the Timed Runs to 16 riders.

RRD & SERIES

Alignment with BEM for the new Class Codes.

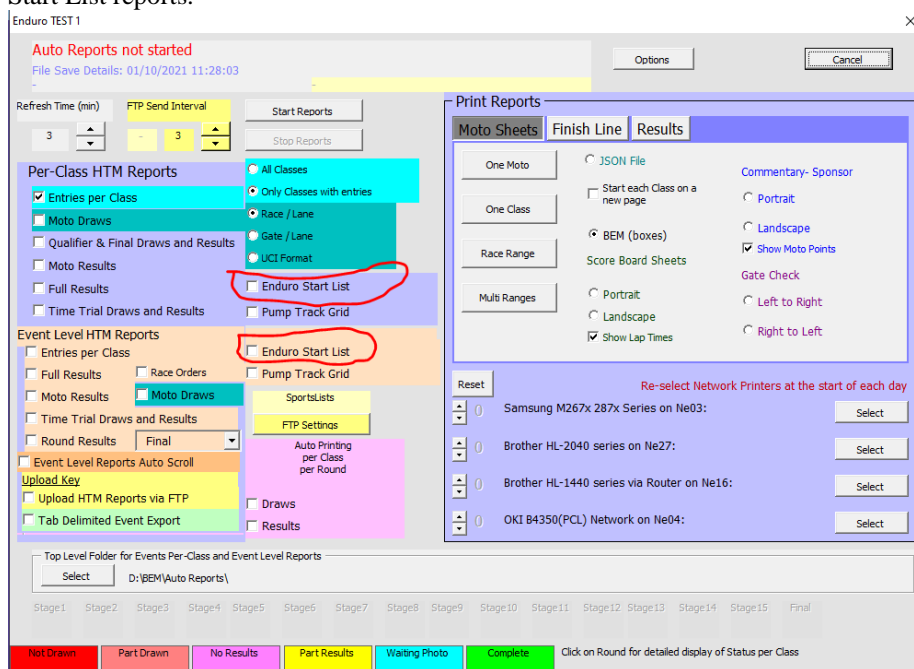
Changes from 11.21.7 to 11.22.0

BEM

- Update for compliance with UCI BMX 2022 rules.
- Update for compliance with AusCycling BMX 2022 rules.
- Introduces a new feature to run MTB Enduro events with BEM. Rule compliance is based on UCI Rules, Part 4 Mountain Bike Chapter V with flexibility to adapt to association specific requirements. Configured in BEM with new Class Code of MTB-ENDURO.
 - Design caters for a maximum of 15 timed stages per event.
 - Individual transponder settings used for each timed stage allowing for a mixture of gate / photocell and loop start.
 - Time penalties and reason for the penalty can be added per rider per stage.
 - New Enduro specific print, HTM and Json reports added.
- Added a new selection option of Licence Number to the existing display of rider’s UCI ID or UCI Code in selected reports.
- Changes for the different data format delivered by Timing and Scoring for Gate Start Transponder numbers from the Smart and Desktop decoders.
With this update, the Start Gate Transponder entered in BEM now uses the same format for both decoder types, i.e. 00-09991, 00-09992 or 00-09993
- Correct the import of lap times in Orbits results format where the decimal part of the time is other than 3 digits.
- Re-format Pump Track Open Session JSON start list reports for alignment with RRD.
- Make provision for race range JSON start lists.
- Correction to UCI DataRide results report for Pump Track events.
- Changed Pump Track stage labels Round 1 and Round 2 to the more meaningful **Round of 32** and **Round of 16**.
- Updated event database in preparation for the AusCycling Advanced Rider feature.

RRD

- Add a new selection option of Licence Number to the existing display of rider's UCI ID or UCI Code in selected reports.
- Make provision for race range JSON start lists.
- Re-format Pump Track Open Session JSON start list reports to be in Time Trial start list format.
- Align Auto Reports JSON file names for Open Session start lists to a common format.
- Added a new report selection in Auto Reports in both Per-Class and Event Level reports for Enduro Start List reports.



- Correction to the operator generated Enduro Start List reports to match the Time Trial Start List format.
- Correction to an omission in earlier builds to the generic category selection user-form which could result in a program error with some operator generated reports from the Report Menu.
- Auto report file names for single stage Pump Track results change from Stage Round 1, Stage Round 2 to Stage Round of 32, Stage Round of 16.
- Corrected a bug with operator generated round reports for Pump Track Open Session results where the wrong format report was being generated.
- Update for compatibility with MTB Enduro changes in BEM.
- Update Json report files used for SportsLists for Enduro.
- Removes unexpected and unwanted operator warning for a class with 0 entries when Event Level Time Trial Draws and Results is selected.

SERIES

- Add a new selection option of Licence Number to the existing display of rider's UCI ID or UCI Code in selected reports.
- Alignment with BEM feature changes.

Operating System Requirements

The recommended PC environment is:

Operating System: 32 or 64 bit versions of Windows XP, Vista (OK but best avoided if possible), Windows 7 and for Windows 8 & 8.1 and Windows 10, full versions, not the RT tablet versions.

If you are using BEM in a networked environment to run transponder timing or the RRD program, use of the Professional rather than the Home versions of Windows are strongly recommended.

Microsoft Office: Office 2003, 2007 or Office 2010.

Note that BEM does not run on Office 2013, 2016 or Office 365 as Microsoft have not maintained full backwards compatibility with Office 2010, 2007 and 2003 versions.

For new PCs that come pre-installed with an Office version later than 2010, the following options are suggested.

1. If you don't have a specific requirement for the new facilities in the pre-installed version Office and haven't paid the licence fee for that:
 - a. Totally remove Office from the PC.
 - b. Buy and install a legitimate version of Office 2010 from eBay or from a download retailer such as https://www.ecrater.com.au/p/30522352/microsoft-office-2010-pro-plus-32-64-bit?gps=1&id=115926669379&keywords=&gclid=CjwKCAjwm4rqBRBUEiwAwaWjjK60coZew2EOxi9W_eodOHFfGc8FKc4vya1IbS3VT41eix1YEFxqnBoCRJgQAvD_BwE
or
https://theunitysoft.com/product/office2010proplus/?gclid=EAIaIQobChMI07_I7NXN4AIVGK6WCh2pWwWhEAYYBCABEgJcpvD_BwE

Typically a legitimate licence is available for around \$10 - \$30, significantly cheaper than the Office 365 / 2016 licence that Microsoft would like you to purchase.

2. If you need to keep the pre-installed Office version on the PC with either Win7, Win8 or Win 10.
 - a. Do a partial installation of Office 2010 installing only Excel 2010 which will happily co-exists with later Office versions.
 - b. To get BEM to open with Office 2010 when you also have later Office versions installed then either:
 - i. Open Excel 2010 before clicking on the BEM icon.
 - ii. Set up your own shortcuts to BEM, RRD, Series and Toolbox that direct to Office 2010. Note that in some PCs, particularly non-english language versions of Windows, the path to Office14 Excel may be different to this example.

Typical Shortcut Target when Office 2010 is a 32bit installation

BEM

"C:\Program Files (x86)\Microsoft Office\Office14\EXCEL.EXE" "C:\BEM\Programs\Event\3.11.x\Bem2K3.xls"

RRD

"C:\Program Files (x86)\Microsoft Office\Office14\EXCEL.EXE" "C:\BEM\Programs\Report\3.11.x\Rrd2K3.xls"

Series

"C:\Program Files (x86)\Microsoft Office\Office14\EXCEL.EXE" "C:\BEM\Programs\Event\3.11.x\Series2K3.xls"

Toolbox

"C:\Program Files (x86)\Microsoft Office\Office14\EXCEL.EXE" "C:\BEM\Programs\Toolbox\BEM_Toolbox3.xls"

BemTrain

"C:\Program Files (x86)\Microsoft Office\Office14\EXCEL.EXE" "C:\BEM\Programs\BemTrain\BemTrain.xls"

Typical Shortcut Target when Office 2010 is a 64bit installation

BEM

"C:\Program Files\Microsoft Office\Office14\EXCEL.EXE" "C:\BEM\Programs\Event\3.11.x\Bem2K3.xls"

RRD

"C:\Program Files\Microsoft Office\Office14\EXCEL.EXE" "C:\BEM\Programs\Report\3.11.x\Rrd2K3.xls"

Series

"C:\Program Files\Microsoft Office\Office14\EXCEL.EXE" "C:\BEM\Programs\Event\3.11.x\Series2K3.xls"

Toolbox

"C:\Program Files\Microsoft Office\Office14\EXCEL.EXE" "C:\BEM\Programs\Toolbox\BEM_Toolbox3.xls"

BemTrain

"C:\Program Files\Microsoft Office\Office14\EXCEL.EXE" "C:\BEM\Programs\BemTrain\BemTrain.xls"

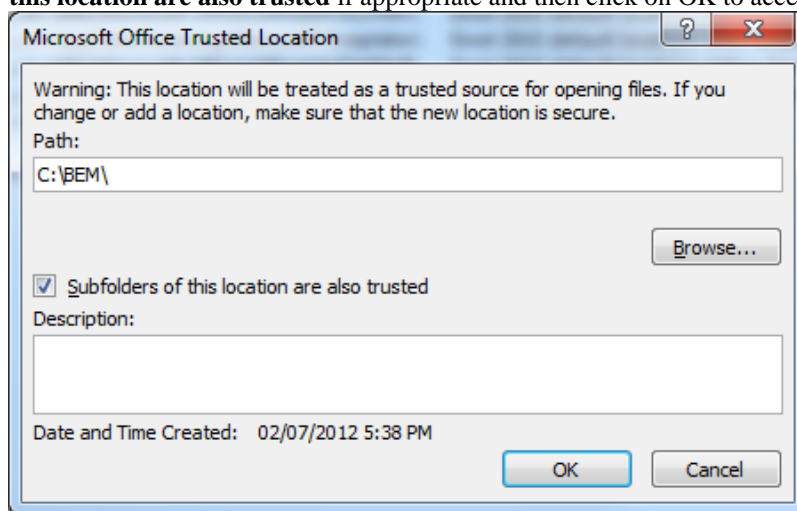
To add these shortcuts to the start menu, copy and paste or create the shortcuts in the following 'Hidden' folder:

C:\Users\username\AppData\Roaming\Microsoft\Windows\Start Menu\Programs

Now open Start Menu > All apps and locate the shortcut(s) you placed. Right-click on it and select Pin to Start.

The following preparatory actions if not already implemented from earlier releases of BEM will avoid compatibility problems.

1. Download and install the latest applicable Office 2003 / 2007 / 2010 service packs and updates. This is very important as there is a history of unpredictable operation should the latest Microsoft updates not be installed.
2. For users running Office 2007 and Office 2010.
 - 2.1. Include the C:\BEM path and any other locations where you save BEM files in the list of Excel Trusted Locations.
Method:
 - 2.1.1. Open Excel.
 - 2.1.2. Select **File** then **Options**.
 - 2.1.3. Select **Trust Center**.
 - 2.1.4. Click on **Trust Center Settings...** button.
 - 2.1.5. Click on **Add new location...** button and add any required paths and select the **Subfolders of this location are also trusted** if appropriate and then click on **OK** to accept and close the dialog



- 2.1.6. . • Click on **OK** to close each of the dialogs until back in Excel which now can be closed.